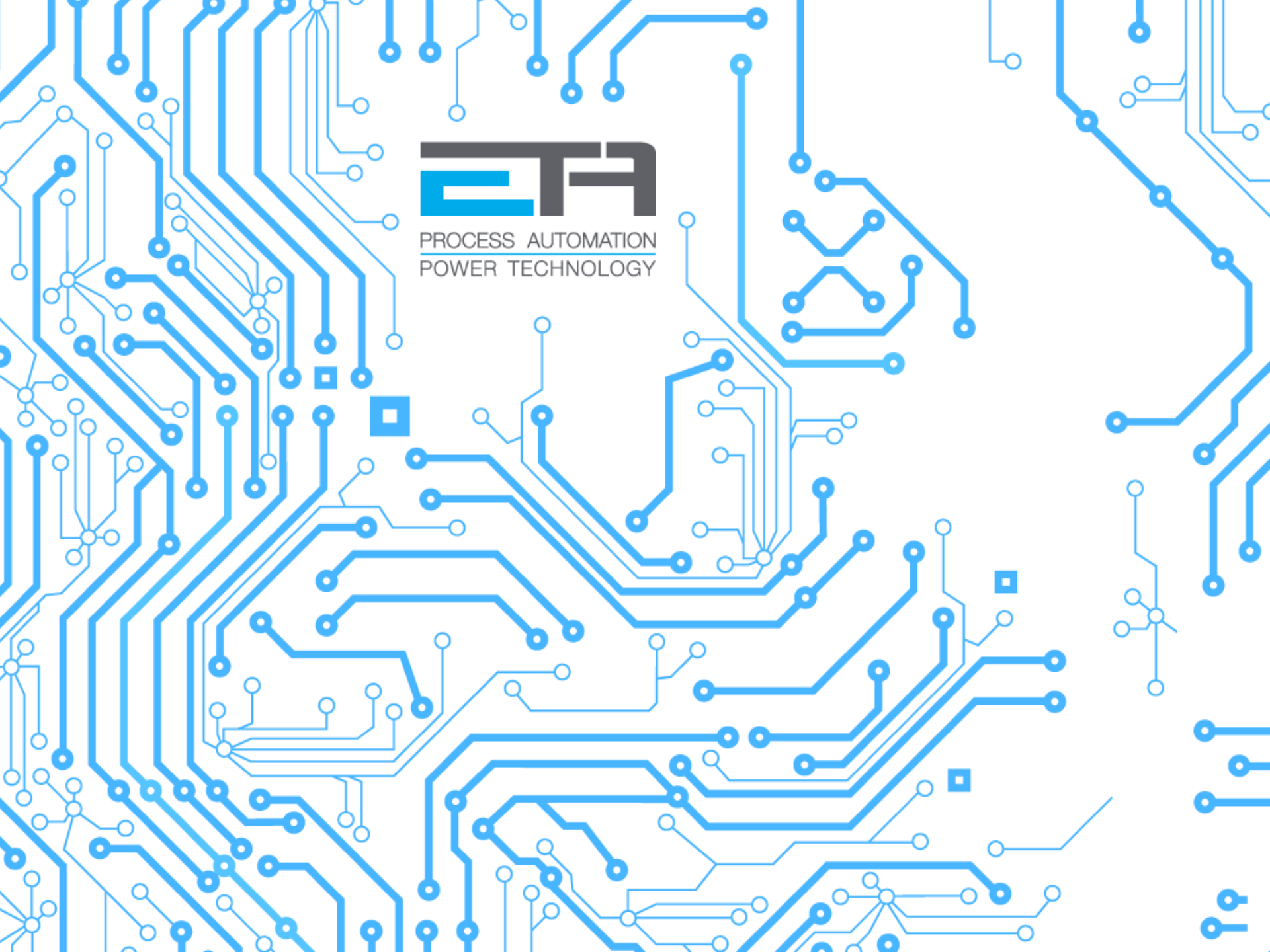




PROCESS AUTOMATION  
POWER TECHNOLOGY



A low-angle photograph of an industrial plant. A prominent feature is a tall, cylindrical chimney with alternating red and white horizontal stripes. The chimney is surrounded by a complex network of silver-colored pipes, walkways, and structural steel. The sky is a clear, pale blue. The overall scene conveys a sense of industrial scale and engineering.

> EXCELLENCE MADE IN ITALY

Founded in 1996, ETA Srl is the natural development of the path of technical and business experiences of the founder starting from the 80's.

Today ETA Srl is a modern, renewed company made by managers and young engineers, whose competence is the base and the quality warrantee for our customers.

# > VALUES

We believe in an ethical behaviour, respectful of human, professional and environmental values.

Our values are quality, competence and innovation.





## > MISSION

Our company aims to be an important market reference in the creation of integrated systems. The innovation and the research for new technological solutions must be our project for today and the assurance of success for the future customers.

# MAKE IT EASY

**1. PROCESS CONTROL AND  
INDUSTRIAL AUTOMATION**

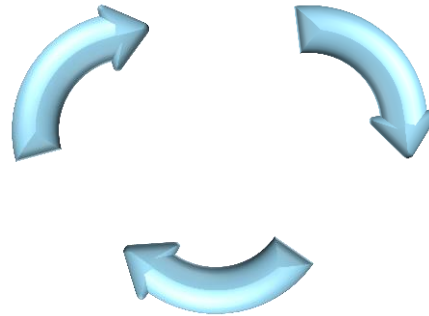
**2. HARDWARE DESIGN**

**6. SERVICE**

**3. SOFTWARE  
DEVELOPMENT**

**5. COMMISSIONING**

**4. PRODUCTION**



# PROCESS CONTROL

1. Design

2. P&ID and flow diagram

3. FCD

4. Working Specifications

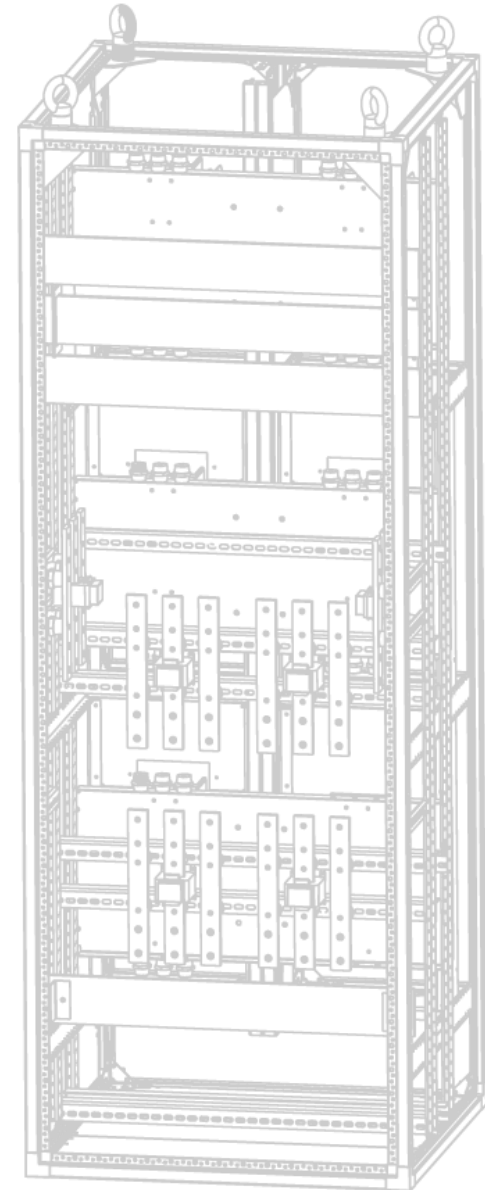
5. Control Logics

# INDUSTRIAL AUTOMATION

1. Customer requirement analysis
2. Feasibility study and Specifications draft
3. Logic schemes, single-line and double-wire diagrams
4. Development and HMI production
5. Engineering
6. Testing
7. Commissioning
8. After sale assistance
9. Ordinary and Extraordinary Maintenance
10. On site and remote assistance 24/7/365
11. New equipment integration
12. Revamping and refitting

# HARDWARE DESIGN

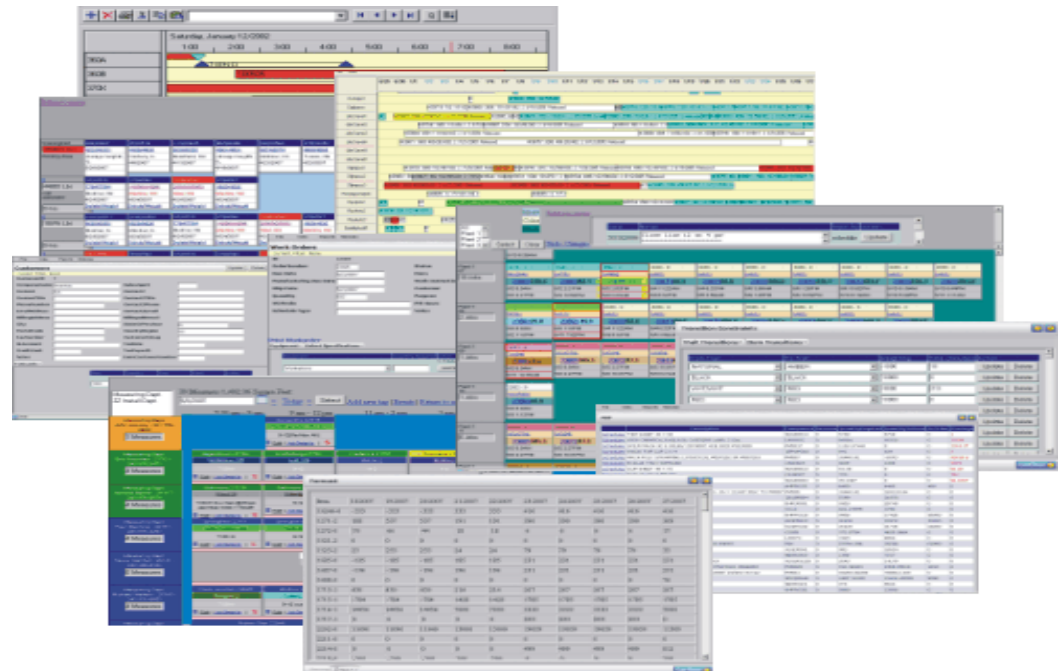
1. Functional schemes and terminal for automation board and Low Voltage switchboard
2. Electrical and Instrumental Layout
3. Power, Instrumentation and Control cables sizing





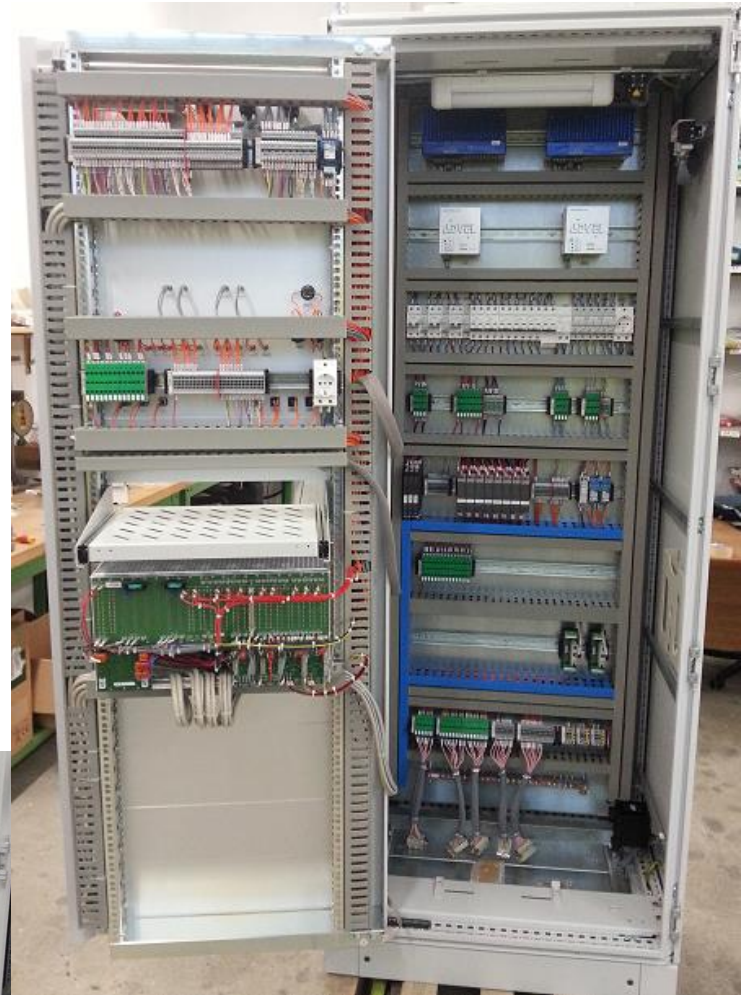
# SOFTWARE DEVELOPMENT

1. Development of software for process control (ESD, DCS, HIPPS, PIDSS, Fire&Gas)
2. Development of customized software applications (AMS System, Report system, Web applications)
3. Development of management and maintenance software for Energy/Industrial/Naval sectors



# PRODUCTION

1. Command and control industrial switchboard
2. Low Voltage switchboard
3. AC/DC switchboard
4. Electric protection switchboard
5. Mixed and MCC switchboard
6. Control room bench structure

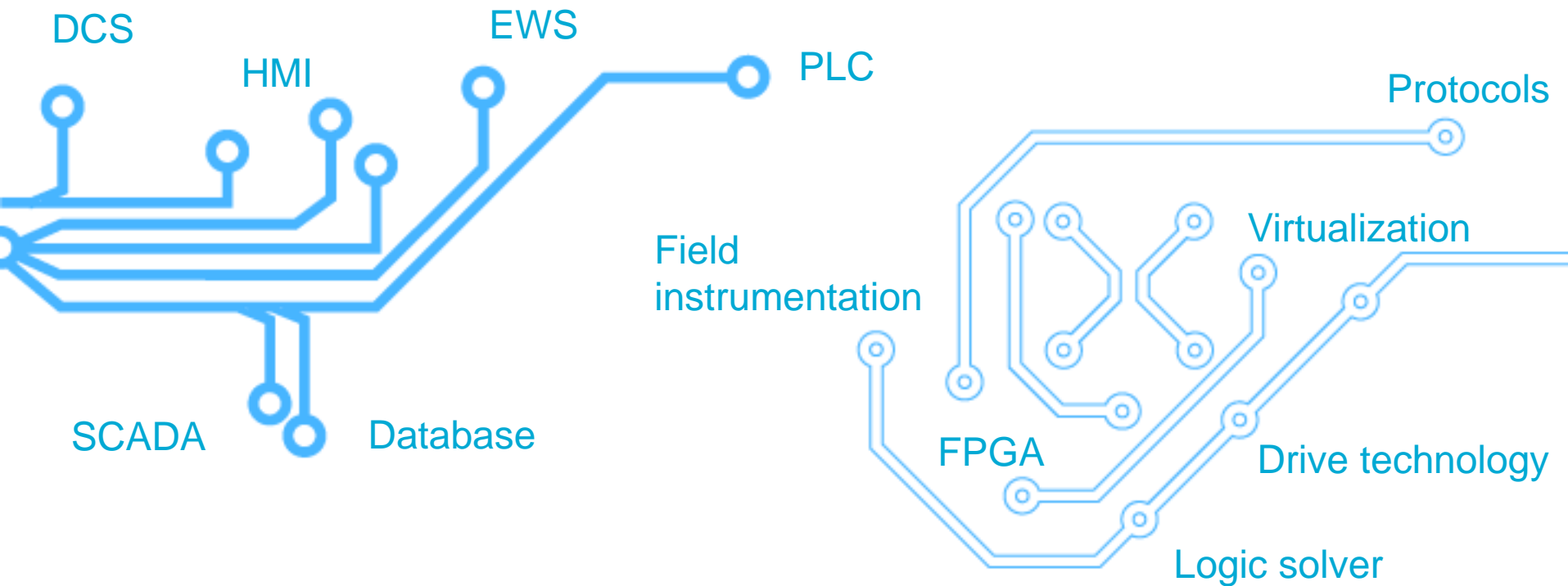


# MARKETS



# TECHNOLOGIES

Our engineers and technicians are highly qualified in worldwide more important industrial automation technologies.



# DCS

**ABB**

Symphony Plus Harmony

**SIEMENS**

SIMATIC IT

**ABB**

OIS Family	Operate IT
PCV	800xA
Conductor	Symphony Plus
Tenore	
PGP/PCP	

**Schneider**  
Electric

Vijeo Citect

Vijeo Designer

## HMI

**SIEMENS**

Win CC

**OMRON**

# PLC TECHNOLOGY

**ABB**

AC800F/M/M-HI    RTU560  
AC31/AC500        UTAC01/02/03  
Advant              Melody



MARK VI  
Fanuc

STANDARD & SAFETY

**Schneider**  
Electric



Telemecanique

Modicom Quantum  
Modicom Premium  
Modicom M340  
Modicom TSXMicro

**SIEMENS**

SIMATIC  
PLC S7 200, 300,  
400

SIL 3



H4I  
H5I

**Rockwell  
Automation**



Allen-Bradley

MicroLogix        ControLogix  
Compact

LOGIC  
SOLVER



Planar 4  
HIMax

SIL 4

# SCADA TECHNOLOGY



Vijeo Citect



i n v e n s y s



InTouch



# EWS TECHNOLOGY

**ABB**

Wincad  
Composer  
CBF/CBM  
Digivis

**SIEMENS**

SIMATIC STEP 7

**Schneider**  
Electric

Unity

**XILINX**

**ALTERA**

**FPGA**

**Lattice**  
Semiconductor  
Corporation

**Actel**



# PROTOCOLS



IEC 870-5-101

IEC 870-5-104

IEC 62056-21



SASP/SAMP

**Modbus**<sup>®</sup>

SPA-BUS



# DATABASE

**ORACLE**<sup>®</sup>



# DRIVE TECHNOLOGY

**SIEMENS**

 Ansaldo Sistemi Industriali

**ABB**

**MOOG**

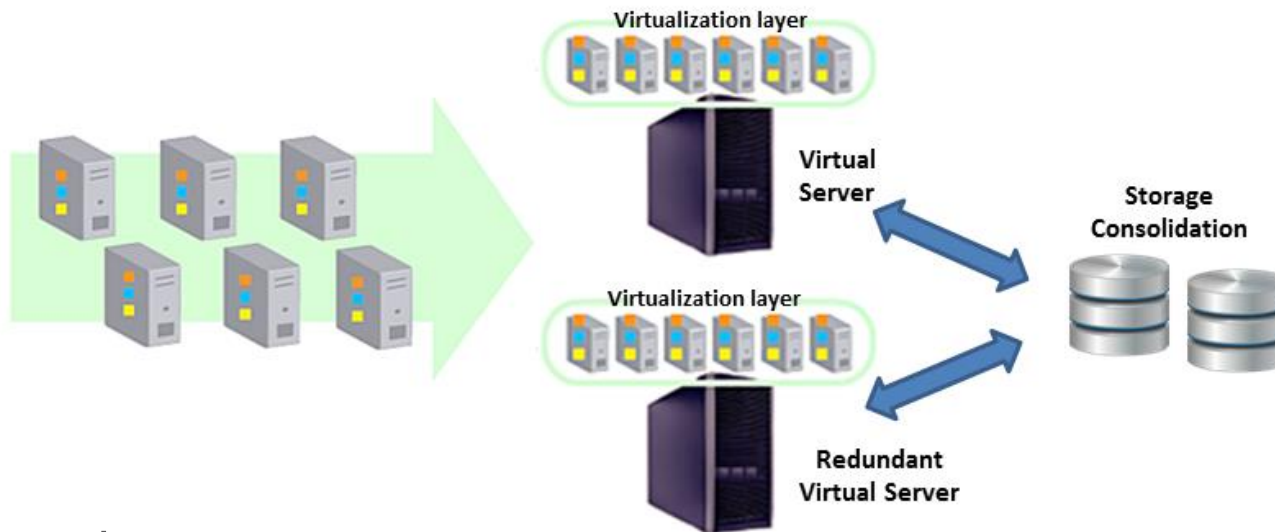
## FIELD INSTRUMENTATION

**VEGA**

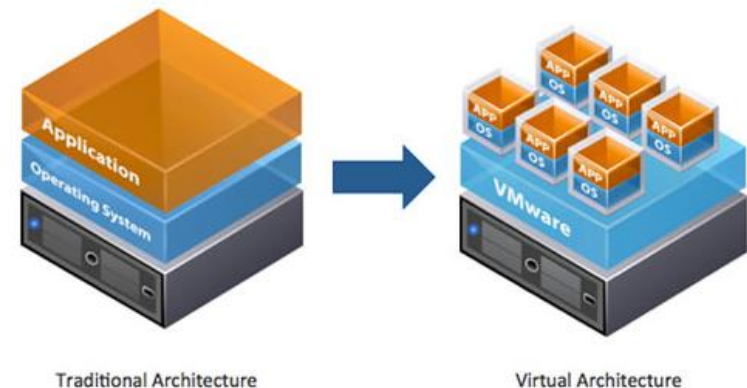
  
**METTLER TOLEDO**

# VIRTUALIZATION

- Many applications on each server
- Maximum server utilization, minimum server count
- Faster, easier application and resource provisioning



- Space saving
- Energy saving
- High availability architecture
- Higher reliability and performance
- Money saving

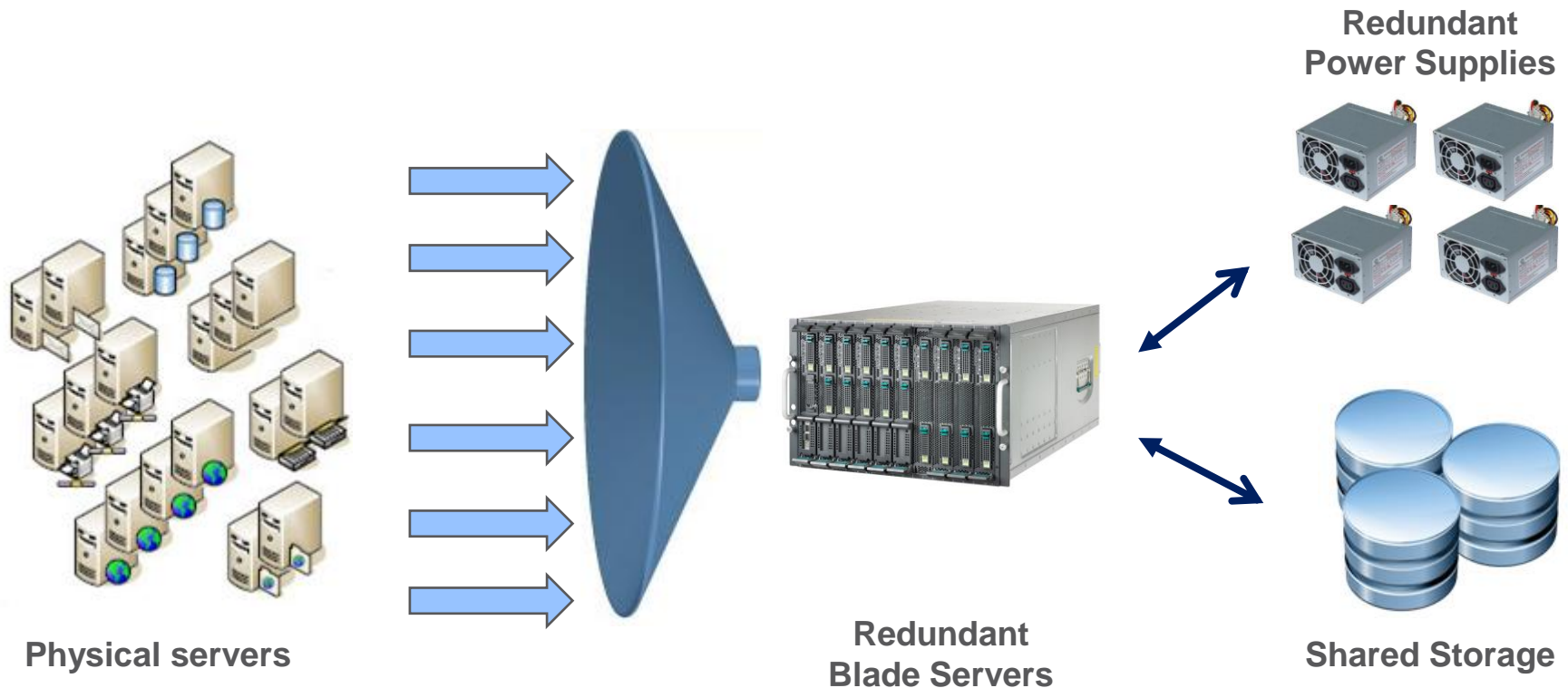


Traditional Architecture

Virtual Architecture

# BLADE SERVER VIRTUALIZATION

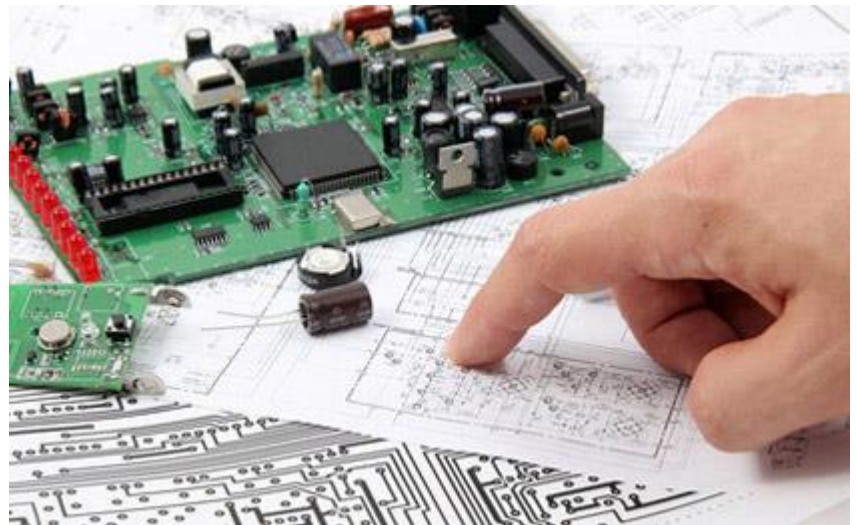
- Simplification
- Central Control
- Self Diagnostic Function
- Effortless future upgrade
- Energy Saving
- Space Saving
- High Availability Architecture
- Redundant Power Supply



# RESEARCH & DEVELOPMENT

Our responsibility towards customers leads us to find innovative solutions to the challenges they have to face

- Development of Software Custom Applications  
Identification and Management of systems' connections
- Development of Embedded Hardware for Industrial Applications  
Protocol converters



# Quality and Competence

Our technicians are «Electric Work Operator»

We work in compliance with CEI 11-27 certification as  
«PES - Persona Esperta» and «PAV - Persona Avvertita»

We can work in compliance with SIL standard  
**IEC 61508** Functional Safety Design of Electrical Systems

Functional Safety Engineer (TÜV Rheinland)



We are certified **ISO 9001:2008**  
for the activities of Engineering automation systems



We are qualified suppliers:



# > WORLDWIDE

Commercial partnerships with Indian company «**EnRevo Ltd**» and German company «**PLT networks**» allow us to have benefits in terms of costs in the production challenges and a greater technical expertise on relevant technologies



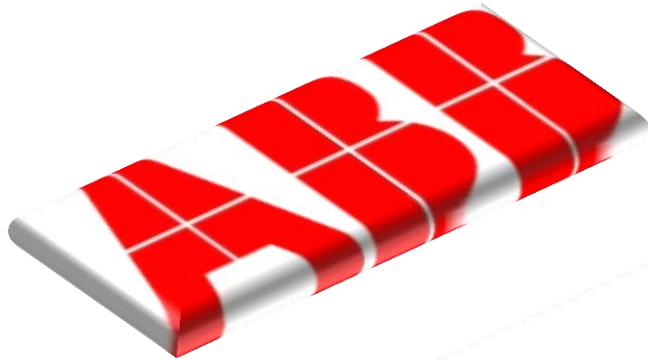


## > WHY ETA Srl?

1. More than fifteen-year experience in the field
2. Human and Professional highly qualified qualities
3. Realisation of turnkey projects and after-sale assistance
4. Commercial partnership with strategy companies
5. Recognized trusted partner of worldwide leader companies in the industry
6. Dynamic organization able to give fast technical answers and to follow-up problems at the site
7. Reliability and Resolution in obtaining the result



# OUR MAIN CUSTOMERS



# PARTNERS



[www.enrevo.in](http://www.enrevo.in)

[info@enrevo.in](mailto:info@enrevo.in)

*(subsidiary)*



[www.plt-networks.de](http://www.plt-networks.de)

[info@plt-networks.de](mailto:info@plt-networks.de)

*(commercial partner)*



**VAT number**  
**IT01323730992**

**info@etasrl.co**  
**www.etasrl.co**

**REGISTERED OFFICE**

Via E.Fico 88, 16039 Sestri Levante (GE) Italy  
Tel./Fax (+39) 0185-459150

**HEADQUARTERS**

Via C.Rossi 1A/2, 16154 Genova (GE) Italy  
Tel./Fax (+39) 010-8602604/9737

**WORKSHOP**

Via Po 15, 27050 Casei Gerola (PV) Italy  
Tel./Fax (+39) 010-8602604/9737